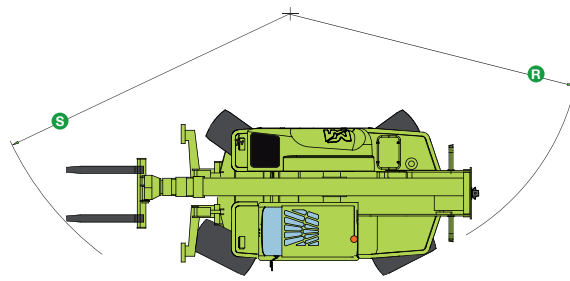
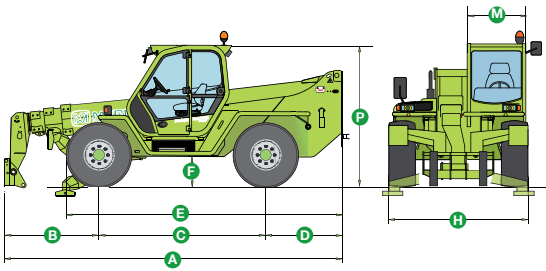


# PANORAMIC P 40.17

## TECHNICAL DATA

P 40.17



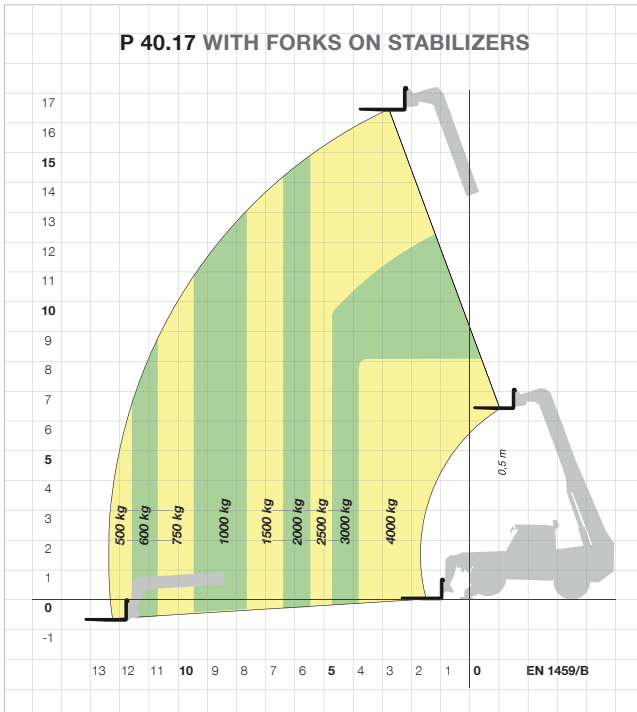
COMPLIANT EN 15000

### DIMENSIONS

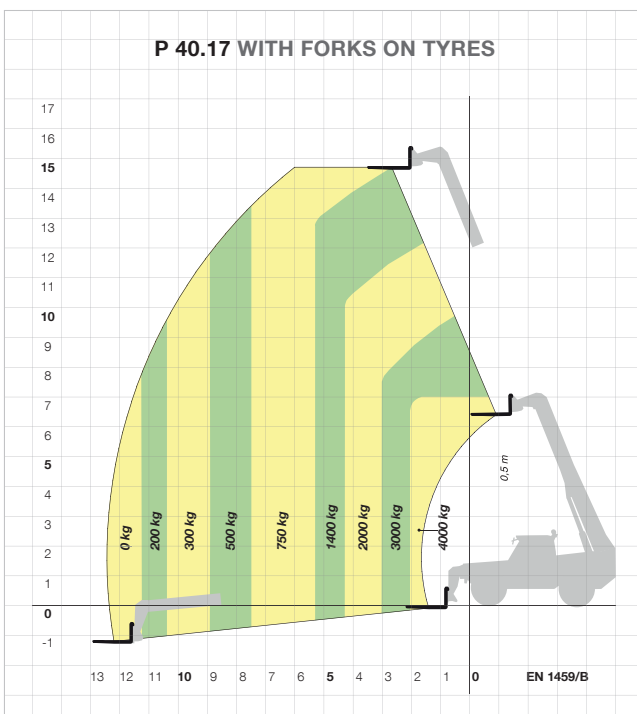
A (mm)	5795	H (mm)	2400
B (mm)	1505	M (mm)	995
C (mm)	2875	P (mm)	2510
D (mm)	1315	R (mm)	4050
E (mm)	4790	S (mm)	5110
F (mm)	480		

\*Internal length useful.

### P 40.17 WITH FORKS ON STABILISERS



### P 40.17 WITH FORKS ON TYRES



### CHARACTERISTICS AND PERFORMANCE

	P 40.17
Total weight unladen, with forks (kg)	10350
Maximum load capacity (kg)	4000
Maximum lift height (m)	16.7
Maximum forward reach (m)	12.5
Lift height at maximum load capacity (m)	8.1
Forward reach at max. load capacity (m)	4
Load capacity at maximum height (kg)	2500
Load capacity at max. forward reach (kg)	500
Boom side-shift (mm)	±435
Frame levelling (%)	±10
Turbo diesel engine (make/cylinder)	Perkins/4
Tier 3 engine power (kW/HP)	74.5/101
Speed in 1st gear range (kph)	16
Speed in 2nd gear range (kph)	40
Hydro-pneumatic suspension EAS	○
Hydro-pneumatic suspension BSS	-
Fuel capacity (l)	150
Hydraulic gear pump (bar-l/min)	-
Load-Sensing hydraulic pump (bar-l/min)	210-115
Hydraulic oil capacity (l)	140
Electrical circuit (V)	12
Battery (Ah)	100
FOPS (ISO 3449) and ROPS (ISO 3471) cab	●
Hydraulic lever controls	●
Electro-mechanical joystick controls	○
Electronic joystick controls	○
Tac-Lock attachment coupling	●
Auxiliary boom hydraulic service	●
Hydrostatic transmission	●
Finger-Touch direction reversing control	●
Inching Control	●
Permanent four-wheel drive	●
Automatically locking parking brake	●
Manual battery isolator	●
Tyres	405/70-24
Four cab working lights (2 f. + 2 r.)	○
Differential lock (front + rear or rear only)	○
Manual air conditioning system	○

● Standard. ○ Option.

Performance figures refer to the machine equipped with forks, operating on stabilisers.

