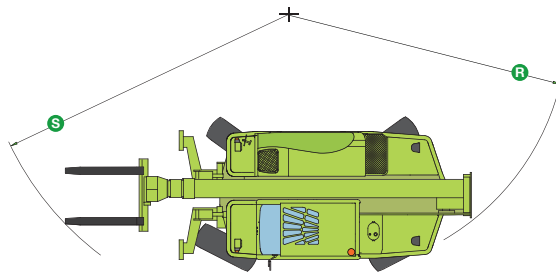
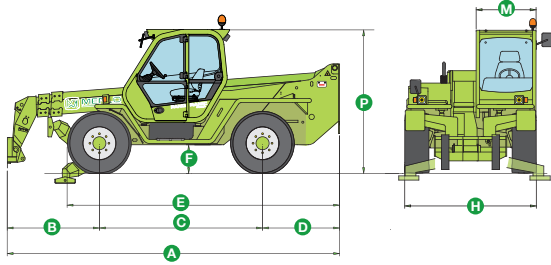


PANORAMIC P 38.14

TECHNICAL DATA

P 38.14 / P 38.14 PLUS



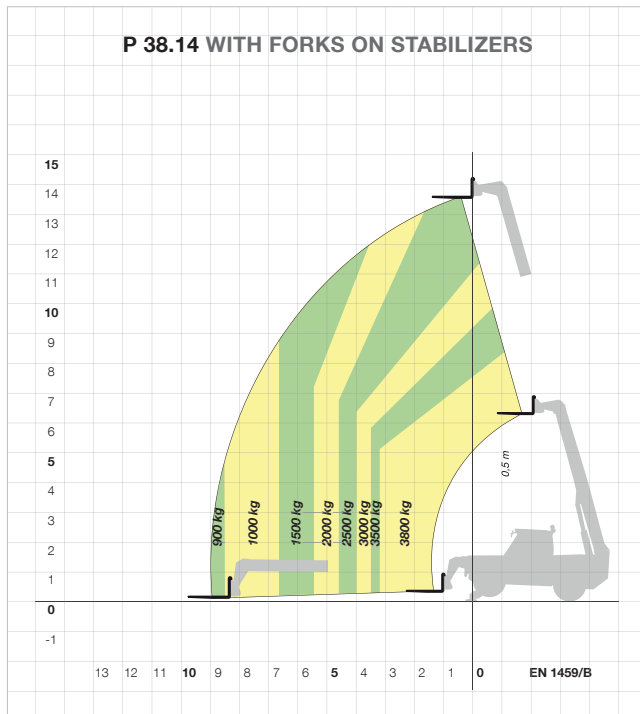
COMPLIANT EN 15000

DIMENSIONS

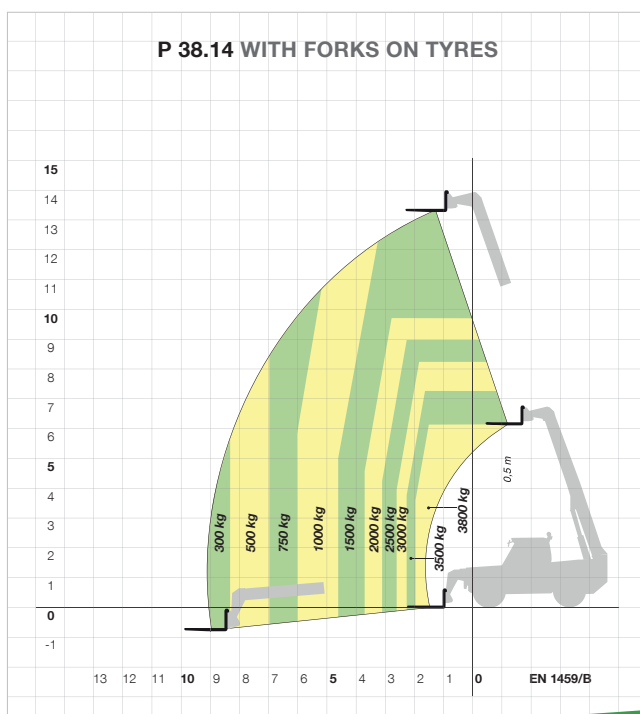
A (mm)	5590	H (mm)	2220
B (mm)	1540	M (mm)	995*
C (mm)	2750	P (mm)	2440
D (mm)	1300	R (mm)	3920
E (mm)	4585	S (mm)	5040
F (mm)	480		

*Internal length useful.

P 38.14 WITH FORKS ON STABILISERS



P 38.14 WITH FORKS ON TYRES



CHARACTERISTICS AND PERFORMANCE

	P 38.14
Total weight unladen, with forks (kg)	9050
Maximum load capacity (kg)	3800
Maximum lift height (m)	13.6
Maximum forward reach (m)	9.1
Lift height at maximum load capacity (m)	8
Forward reach at max. load capacity (m)	3.3
Load capacity at maximum height (kg)	2500
Load capacity at max. forward reach (kg)	900
Boom side-shift (mm)	±345
Frame levelling (%)	±10
Turbo diesel engine (make/cylinder)	Perkins/4
Tier 3 engine power (kW/HP)	74.5/101 ⁽¹⁾
Speed in 1st gear range (kph)	14 ⁽¹⁾
Speed in 2nd gear range (kph)	40 ⁽¹⁾
Hydro-pneumatic suspension EAS	○
Hydro-pneumatic suspension BSS	-
Fuel capacity (l)	150
Hydraulic gear pump (bar-l/min)	-
Load-Sensing hydraulic pump (bar-l/min)	210-108
Hydraulic oil capacity (l)	105
Electrical circuit (V)	12
Battery (Ah)	100
FOPS (ISO 3449) and ROPS (ISO 3471) cab	●
Hydraulic lever controls	●
Electro-mechanical joystick controls	○
Electronic joystick controls	○
Tac-Lock attachment coupling	●
Auxiliary boom hydraulic service	●
Hydrostatic transmission	●
Finger-Touch direction reversing control	●
Inching Control	●
Permanent four-wheel drive	●
Automatically locking parking brake	●
Manual battery isolator	●
Tyres	405/70-20
Four cab working lights (2 f. + 2 r.)	○
Differential lock (front + rear or rear only)	○
Manual air conditioning system	○

● Standard. ○ Option.

Performance figures refer to the machine equipped with forks, operating on stabilisers.

(1) Plus version only. The basic model has a speed of 7-25 kph and an engine of 62.5 kW (85 HP).

